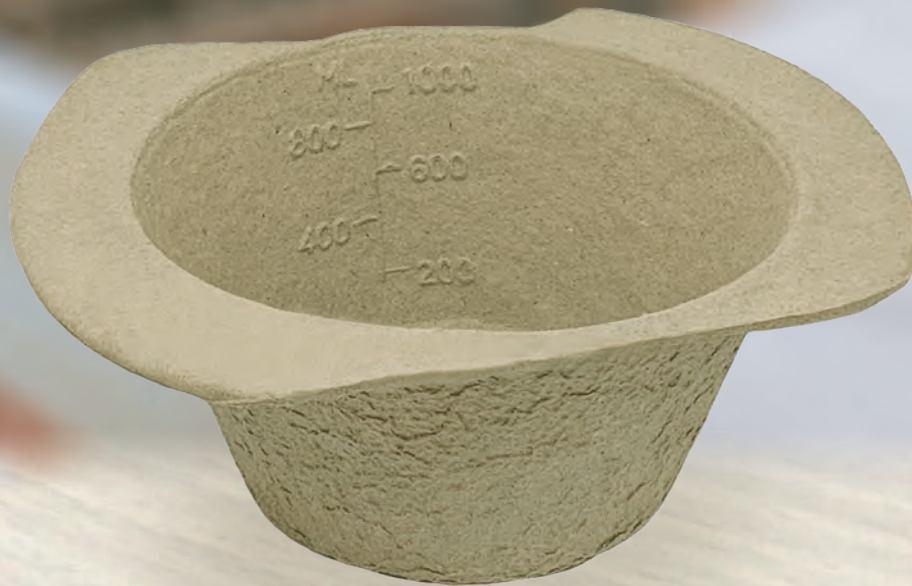


GENERAL PURPOSE BOWL 1000ML

Eco-Friendly Medical Pulp



Made from
BIODEGRADABLE
Double Lined Kraft

Designed for Single Use to
Reduce Risk of Infection



Our disposable General Purpose Bowl with 1L capacity, comes with graduation markings is ideal for washing or vomiting. This is designed for single use so as to reduce the risk of infection.

Suitable for



Hospitals



Nursing Homes



Personal Use

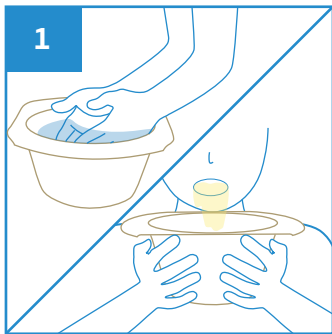


Medical Clinics

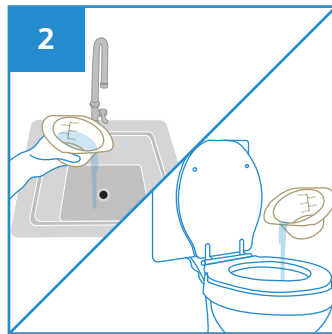


Disability Homes

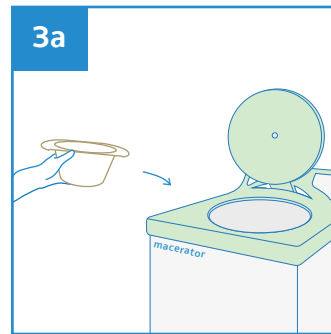
User Guide



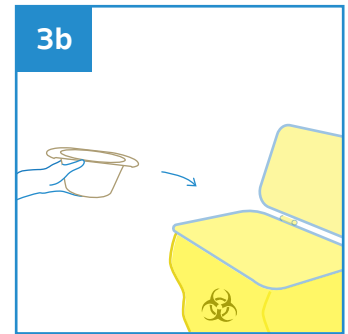
1 Use General Purpose Bowl for washing or vomiting



2 After use, empty the contents into sink or toilet bowl



3a Dispose the General Purpose Bowl directly into macerator



3b Dispose the General Purpose Bowl directly into appropriate waste bins



Stackable



Water Retention



Macerator Friendly



Eco-Friendly



Recycled

PRODUCT DESCRIPTION

General Purpose Bowl 1000ml

PRODUCT SIZE

220 x 170 x 85 mm

PACKAGING

100 pcs per carton

CARTON DIMENSION

510 x 260 x 360 mm

ORDER CODE

100APGPB1000



Manufactured in accordance with PAS29:1999
Disposable Pulp Products For Use in Healthcare

Rev4(0225)EN



APEX PULP PTE LTD

www.apexpulp.com

sales@apexpulp.com

© 2025 APEX PULP PTE LTD. All rights reserved.