

GENERAL SEMI BOWL 1500ML Eco-Friendly Medical Pulp



Made from
BIODEGRADABLE
Double Lined Kraft

Designed for Single Use to
Reduce Risk of Infection



The General Semi Bowl with 1.5L rated capacity is made from eco-friendly biodegradable kraft material, intended for use as vomit bowl or sampling of urine and/or faeces by placing it over toilet bowl.

Manufactured as single-use disposable medical pulp to meet the requirement to hold water and/or human waste for a minimum period of four hours at an initial temperature of 35°C. Suitable for disposal into macerator which complies with PAS29:1999 "Disposable Pulp For Use in Healthcare".

Suitable for



Hospitals



Nursing Homes



Personal Use

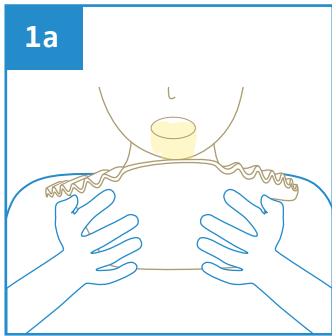


Medical Clinics

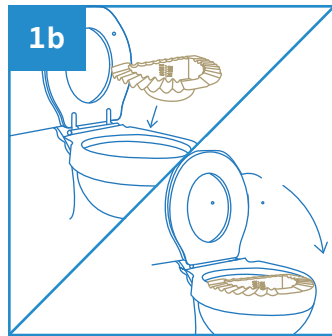


Disability Homes

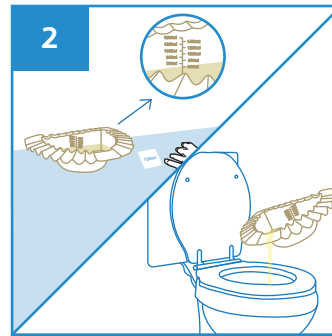
User Guide



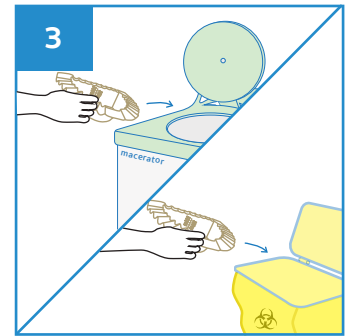
For vomiting, hold the General Semi Bowl with both hands below the chin and vomit into it.



For sampling, raise the toilet seat lid, place the General Semi Bowl over the toilet bowl (place front for urine or rear for faeces) and lower the lid.



Read and record volume of the liquid from the level markings.



Dispose the General Semi Bowl directly into macerator or empty liquid from the bowl before disposing into appropriate waste bins.



Stackable



Water Retention



Macerator Friendly



Eco-Friendly



Recycled

PRODUCT DESCRIPTION

General Semi Bowl 1500ml

PRODUCT SIZE

330 x 220 x 110 mm

PACKAGING

100 pcs per carton

CARTON DIMENSION

450 x 340 x 450 mm

ORDER CODE

100APPGSB1500



Manufactured in accordance with PAS29:1999
Disposable Pulp Products For Use in Healthcare

Rev1(0225)EN



APEX PULP PTE LTD

www.apexpulp.com

sales@apexpulp.com

© 2025 APEX PULP PTE LTD. All rights reserved.



APEX PULP
Manufacturer of Moulded Pulps

Ref: APEX-PIB-GSB1500