

# GENERAL WASH BOWL 3000ML Eco-Friendly Medical Pulp



Made from  
**BIODEGRADABLE**  
Double Lined Kraft

Designed for Single Use to  
Reduce Risk of Infection



Our General Wash Bowl 3L, crafted from recycled Kraft Paper, is a sustainable single-use solution. With a capacity of 3 liters, it reduces the risk of cross-contamination while retaining soapy water at 45°C for up to 4 hours. Perfect for rinsing and washing towels in healthcare settings.

**Suitable for**



Hospitals



Nursing Homes



Personal Use



Medical Clinics



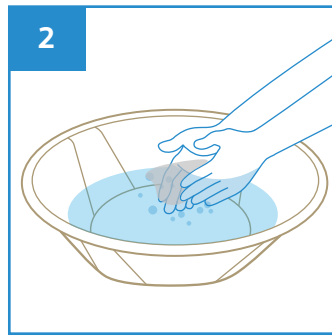
Disability Homes

**User Guide**

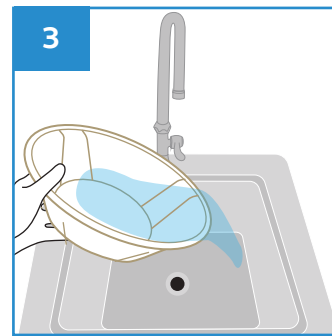


1 Dispense and apply soap directly on the patient's body or on a towel

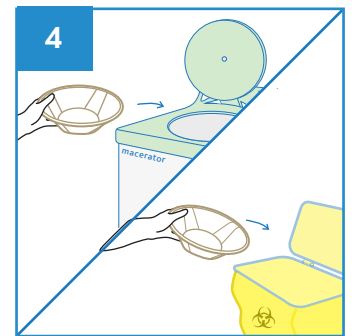
Caution  
Do not dispense soap directly into the wash bowl



2 Rinse the towel in the General Wash Bowl, and wipe the patient body clean



3 After use, empty the contents into the sink



4 Dispose the General Wash Bowl directly into macerator or into appropriate waste bins.

Note: DO NOT dispose the towel into macerator.



Stackable



Water Retention



Macerator Friendly



Eco-Friendly



Recycled

**PRODUCT DESCRIPTION**

General Wash Bowl 3000ml

**PRODUCT SIZE**

Ø300 x 100 mm

**PACKAGING**

100 pcs per carton

**CARTON DIMENSION**

755 x 370 x 310 mm

**ORDER CODE**

100APPGWB3000



Manufactured in accordance with PAS29:1999  
Disposable Pulp Products For Use in Healthcare

Rev2(0325)EN

