

GENERAL WASH BOWL 4000ML Eco-Friendly Medical Pulp



Made from
BIODEGRADABLE
Double Lined Kraft

Designed for Single Use to
Reduce Risk of Infection



Our General Wash Bowl 4L, crafted from recycled Kraft Paper, is a sustainable single-use solution. With a capacity of 4 liters, it reduces the risk of cross-contamination while retaining soapy water at 45°C for up to 4 hours. Perfect for rinsing and washing towels in healthcare settings.

Suitable for



Hospitals



Nursing Homes



Personal Use



Medical Clinics



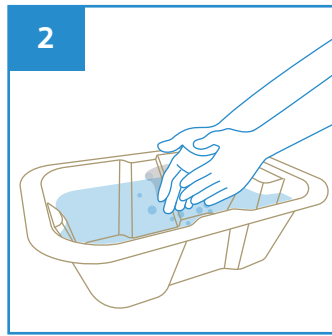
Disability Homes

User Guide

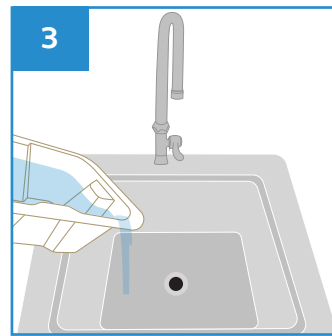


1 Dispense and apply soap directly on the patient's body or on a towel

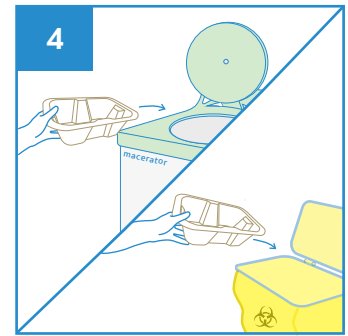
Caution
Do not dispense soap directly into the wash bowl



2 Rinse the towel in the General Wash Bowl, and wipe the patient body clean



3 After use, empty the contents into the sink



4 Dispose the General Wash Bowl directly into macerator or into appropriate waste bins.

Note: DO NOT dispose the towel into macerator.



Stackable



Water Retention



Macerator Friendly



Eco-Friendly



Recycled

PRODUCT DESCRIPTION

General Wash Bowl 4000ml

PRODUCT SIZE

350 x 255 x 120 mm

PACKAGING

100 pcs per carton

CARTON DIMENSION

520 x 360 x 500 mm

ORDER CODE

100APPGWB4000



Manufactured in accordance with PAS29:1999
Disposable Pulp Products For Use in Healthcare

Rev5(0325)EN



APEX PULP PTE LTD

www.apexpulp.com

sales@apexpulp.com

© 2025 APEX PULP PTE LTD. All rights reserved.

APEX PULP
Manufacturer of Moulded Pulps

Ref: APEX-PIB-GWB4000