

KIDNEY DISH 950ML

Eco-Friendly Medical Pulp



Made from
BIODEGRADABLE
Double Lined Kraft

Designed for Single Use to
Reduce Risk of Infection



The Kidney Dish is made from eco-friendly biodegradable kraft material, intended for use as multi-purpose dish to carry surgical instrument, dressings, wipes, creams and other medical items.

Manufactured as single-use disposable medical pulp to meet the requirement to hold water and/or human waste for a minimum period of four hours at an initial temperature of 35°C. Suitable for disposal into macerator which complies with PAS29:1999 "Disposable Pulp For Use in Healthcare".

Suitable for



Hospitals



Nursing Homes



Personal Use

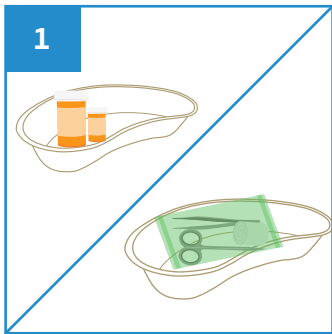


Medical Clinics

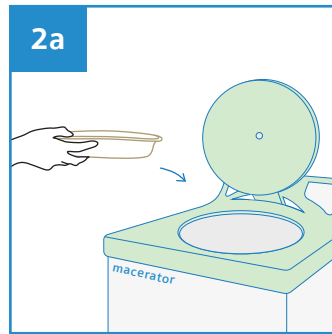


Disability Homes

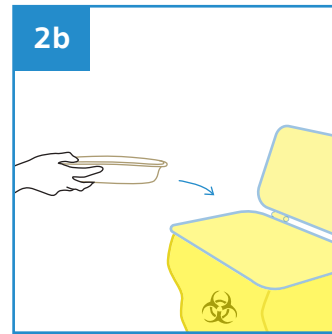
User Guide



1 Place medical items on Kidney Dish.



2a After use, dispose the empty Kidney Dish into macerator or into appropriate waste bins.



Note: DO NOT dispose medical items into macerator.



Stackable



Water Retention



Macerator Friendly



Eco-Friendly



Recycled

| PRODUCT DESCRIPTION | PRODUCT SIZE | PACKAGING | CARTON DIMENSION | ORDER CODE |
|---------------------|-------------------|--------------------|--------------------|---------------|
| Kidney Dish 950ml | 270 x 140 x 55 mm | 300 pcs per carton | 580 x 360 x 420 mm | 100APPKND0950 |



Manufactured in accordance with PAS29:1999
Disposable Pulp Products For Use in Healthcare

Rev3(0225)EN

