

MIDI SLIPPER PAN LINER GRADUATED 1300ML Eco-Friendly Medical Pulp



Made from
BIODEGRADABLE
Double Lined Kraft

Designed for Single Use to
Reduce Risk of Infection



The Midi Slipper Pan Liner with 1.3L rated capacity is made from eco-friendly biodegradable kraft material, intended for use as fracture receptacle for urine and/or faeces. To use the midi slipper pan liner on the bed, place it over a plastic support.

Manufactured as single-use disposable medical pulp to meet the requirement to hold water and/or human waste for a minimum period of four hours at an initial temperature of 35°C. Suitable for disposal via macerator which complies with PAS29:1999 "Disposable Pulp For Use in Healthcare".

Suitable for



Hospitals



Nursing Homes



Personal Use

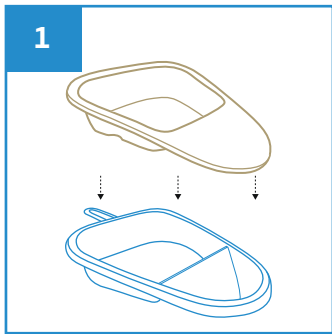


Medical Clinics

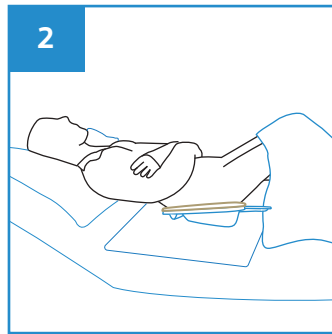


Disability Homes

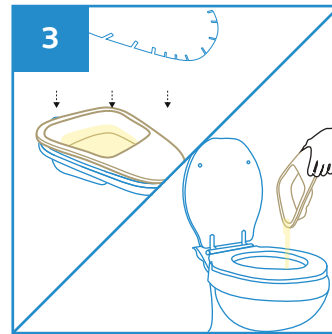
User Guide



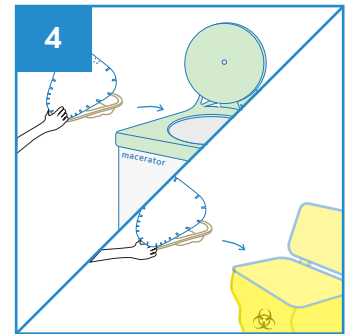
Place the Midi Slipper Pan Liner over the plastic midi slipper pan support.



Slide the Midi Slipper Pan Liner with support under the buttock. To prevent spills, place a sheet of incontinence pad under the Midi Slipper Pan.



After use, remove the Midi Slipper Pan Liner with support, place a lid cover over it to contain the odour and sight.



Dispose the Midi Slipper Pan Liner directly into macerator or empty the content from the midi slipper pan liner before disposing into appropriate waste bins.

Note: DO NOT dispose the plastic support into macerator.



Stackable



Water Retention



Macerator Friendly



Eco-Friendly



Recycled

PRODUCT DESCRIPTION

Midi Slipper Pan Liner 1300ml

PRODUCT SIZE

345 x 305 x 80 mm

PACKAGING

100 pcs per carton

CARTON DIMENSION

580 x 360 x 420 mm

ORDER CODE

100APPMSP1300



Manufactured in accordance with PAS29:1999
Disposable Pulp Products For Use in Healthcare

Rev1(0225)EN

