

ANAESTHETIC TRAY 2-COMPARTMENT Eco-Friendly Medical Pulp



Made from
BIODEGRADABLE
Sugarcane Bagasse

Designed for Single Use to
Reduce Risk of Infection

The Food Grade Anaesthetic Tray with 2-Compartment is made from eco-friendly biodegradable sugarcane bagasse, intended for use as multi-purpose tray to carry ampoules at the small compartment, surgical instruments, dressings, wipes, creams and other medical items at the large compartment. It is designed with smooth inner finishing and meshed outer surface for extra grip.

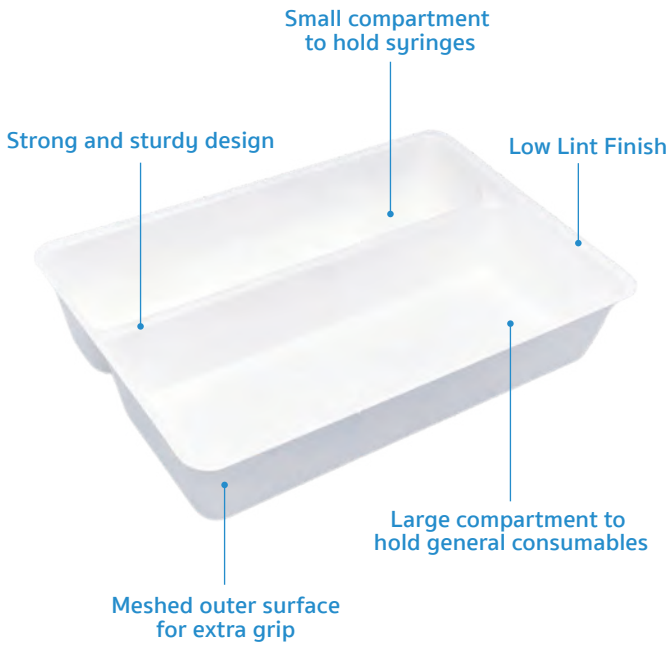
Manufactured as single-use disposable medical pulp to meet the requirement to hold water and/or human waste for a minimum period of four hours at an initial temperature of 35°C. Suitable for disposal into macerator which complies with PAS29:1999 "Disposable Pulp For Use in Healthcare".

Features

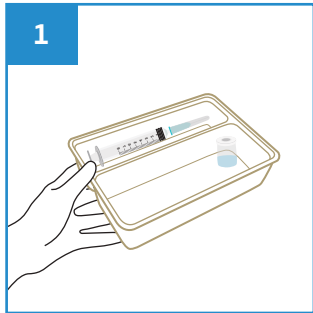
- Consist of two deep compartments, ideal for surgical procedures
- Able to retain water for at least 4 hours
- Non-sterile, single use tray
- Meshed outer surface for better grip
- Made from sugarcane bagasse
- Biodegradable and compostable
- Can be disposed into macerator
- Manufactured in accordance with:
 - EU Regulation No. 1935/2004
Materials intended to come into contact with food
 - US FDA 21 CFR 176.170
Components of paper and paperboard in contact with aqueous and fatty foods.

Caution

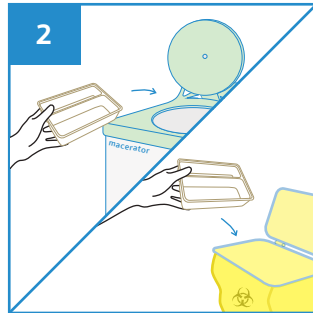
- Do not pour alcohol based solutions into the 2-Compartment Tray.



User Guide



Place surgical items on the Anaesthetic Tray.



After use, dispose the Anaesthetic Tray into macerator or appropriate waste bins.



Stackable



Water Retention



Macerator Friendly



Eco-Friendly

PRODUCT DESCRIPTION

Anaesthetic Tray 2-Compartment Tray

PRODUCT SIZE

225 x 180 x 50 mm

PACKAGING

300 pcs per carton

CARTON DIMENSION

510 x 260 x 210 mm

ORDER CODE

101APPT2C2000



Manufactured in accordance with PAS29:1999
Disposable Pulp Products For Use in Healthcare

Rev1(0225)EN



APEX PULP PTE LTD

www.apexpulp.com

sales@apexpulp.com

© 2025 APEX PULP PTE LTD. All rights reserved.



APEX PULP
Manufacturer of Moulded Pulps

Ref: APEX-PIB-T2C2000