

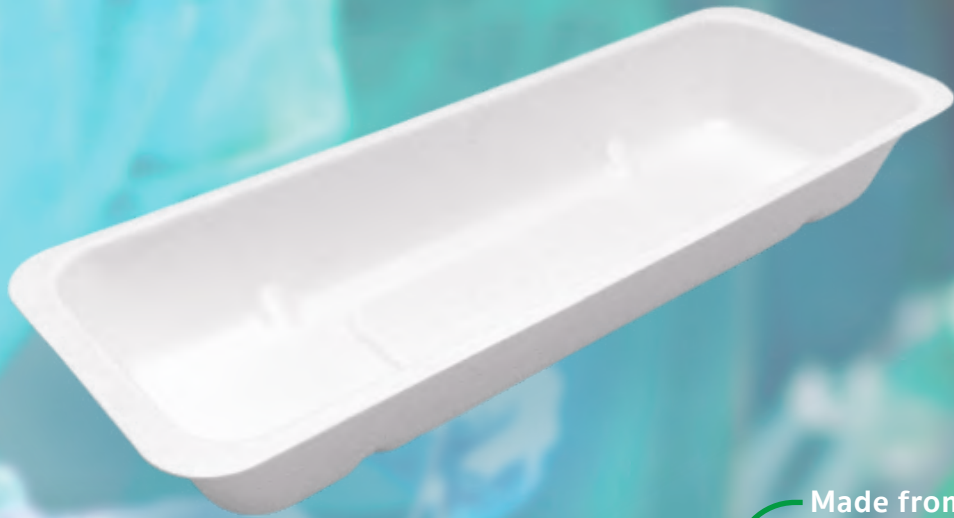


APEX PULP

Manufacturer of Moulded Pulps

INJECTION TRAY 200ML

Eco-Friendly Medical Pulp



Made from
BIODEGRADABLE
Sugarcane Bagasse

Designed for Single Use to
Reduce Risk of Infection



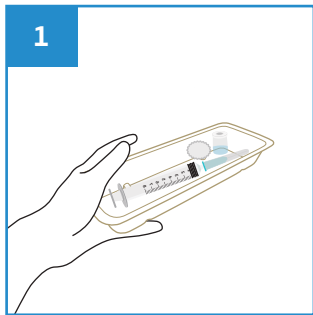
The Food Grade Injection Tray with 200ml rated capacity is made from eco-friendly biodegradable sugarcane bagasse, intended for use as multi-purpose tray to carry syringes and other medical items. It is designed with smooth inner finishing and meshed outer surface for extra grip.

Manufactured as single-use disposable medical pulp to meet the requirement to hold water and/or human waste for a minimum period of four hours at an initial temperature of 35°C. Suitable for disposal into macerator which complies with PAS29:1999 "Disposable Pulp For Use in Healthcare".

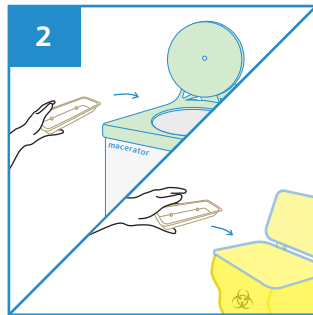
Features

- Ideal for surgical procedures
- Able to retain water for at least 4 hours
- Non-sterile, single use tray
- Meshed outer surface for better grip
- Made from sugarcane bagasse
- Biodegradable and compostable
- Can be disposed into macerator
- Manufactured in accordance with:
 - EU Regulation No. 1935/2004
Materials intended to come into contact with food
 - US FDA 21 CFR 176.170
Components of paper and paperboard in contact with aqueous and fatty foods.

User Guide



1 Place surgical items on the Injection Tray.



2 After use, dispose the Injection Tray into macerator or appropriate waste bins.

Caution

- Do not pour alcohol based solutions into the Injection Tray.



Stackable



Water Retention



Macerator Friendly



Eco-Friendly

PRODUCT DESCRIPTION

Injection Tray 200ml

PRODUCT SIZE

200 x 75 x 30 mm

PACKAGING

1000 pcs per carton

CARTON DIMENSION

400 x 300 x 230 mm

ORDER CODE

101APPTIJ0200



Manufactured in accordance with PAS29:1999
Disposable Pulp Products For Use in Healthcare

Rev1(0225)EN



APEX PULP PTE LTD

www.apexpulp.com

sales@apexpulp.com

© 2025 APEX PULP PTE LTD. All rights reserved.



APEX PULP
Manufacturer of Moulded Pulps

Ref: APEX-PIB-TIJ0200